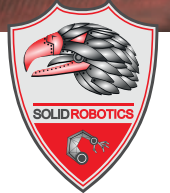




## HOSE-PULL®

Operation and technical support device



**HOSE-PULL®** is an adaptable and very robust technical support tool. The device assists personnel on the field by significantly improving the mobility of a large and long hose lays. With their omnidirectional wheels, it can move all over different types of surface. By reducing hoseline ground friction, it eases their movements on the fireground areas and reduces physical stress while handling it.

### HOSE-PULL® highlights

-  Simplifying fireground hose lay movements
-  Adaptable to different types of surface
-  Large weight capacity
-  Quick set up (less than 5 sec)
-  Fully engineered, manufactured, and assembled at our workshop
-  Minimal maintenance required (high pressure water washing)
-  Adaptable to different hose line diameters
-  Easy, safe and fast assembly through the two-in-one system Slic Pins™ (composed of an axle and a pin)



## FEATURES

PARAMETER	DESCRIPTION
<b>Cradle + Wheels materials</b>	PA66 GF-30
<b>Component materials</b>	Stainless steel 304
<b>Diameter</b>	Up to 70 mm (approx. 2 3/4 inches) Up to 110 mm (approx. 4 1/2 inches)
<b>Max Temperature</b>	80°C (176°F)
<b>Min Temperature</b>	- 20°C (-4°F)
<b>Wheels colors</b>	Red / Black
<b>Cradle colors</b>	Red / Black
<b>Warranty</b>	1-year parts and labour



## ACCESSORIES & OPTIONS

### HOSE-PULL double format by adding a cradle using a connecting ring



- Polymer made dual cradleModularity for -
- Adaptable to different hose line sizes
- Available diameters:  
70 mm (2 3/4 inches)  
110 mm (4 1/2 inches)

## PARTNERS



**ZONE DE SECOURS  
LUXEMBOURG**



DEFENSE / SECURITY / CIVIL PROTECTION  
ENGINEERING / ROBOTIC DISTRIBUTION CO.

**SOLIDROBOTICS**

A: 14, rue Charles V - 75004 Paris

P: +33 (0)621 041 751 / +33 (0)972 392 516

E: [contact@solidrobotics.com](mailto:contact@solidrobotics.com)



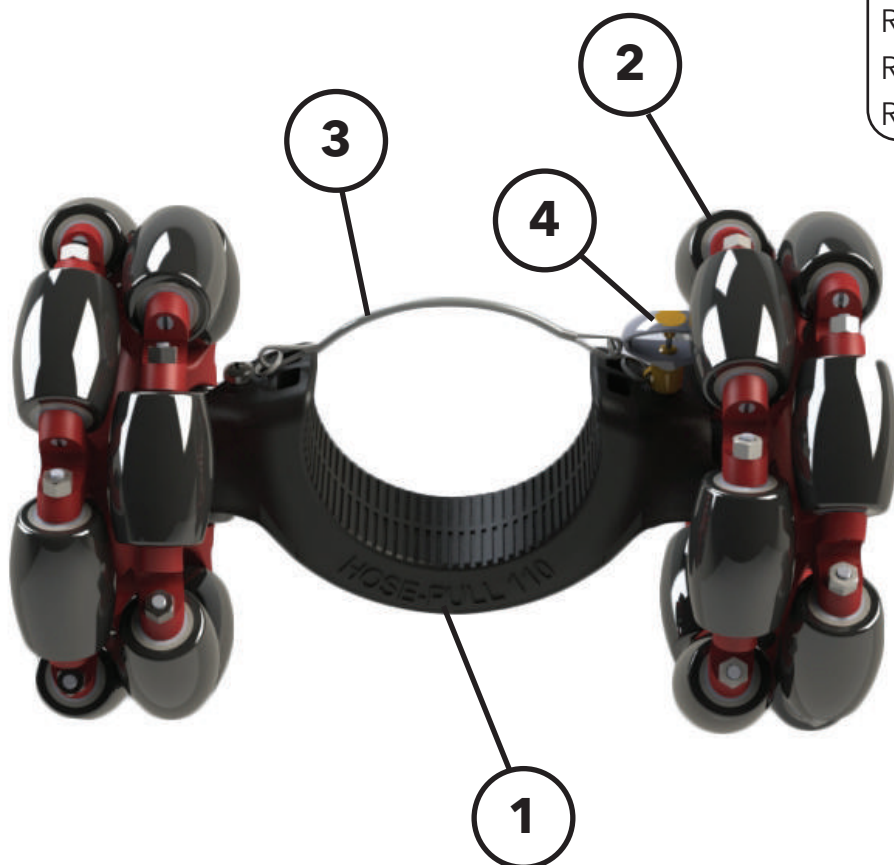
## Simple HOSE-PULL®

**HOSE-PULL®** is made of a polymer cradle and two omnidirectional wheels allowing it to maneuver on different types of surface.



### FEATURES

DN70 weight	4,43 Kg (9,77 lbs)
DN110 weight	4,59 Kg (10,12 lbs)
DN70 color	Red
DN110 color	Black
Rims colors	Black / Red
Ref UGAP	2716089
Ref Gallin	G090062



### NOMENCLATURE

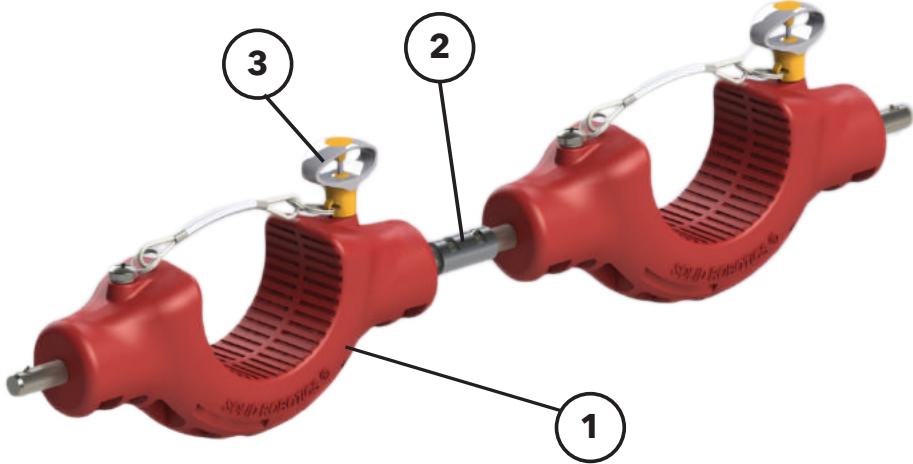
<b>1</b>	Cradle
<b>2</b>	Wheel
<b>3</b>	Stainless steel retention cable
<b>4</b>	Locking mechanism

**OPTIONS**

**Double HOSE-PULL®**

From the single HOSE-PULL model base, cradles can be twinned through a connecting ring.

● **Double cradle model with connecting ring**



COMPONENTS

1	Cradle
2	Connecting ring
3	Locking mechanism

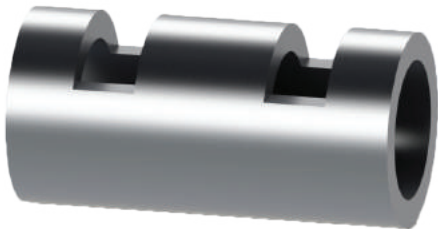
● **Black DN110 simple cradle (110mm (4 ½ inches))**



● **Red DN70 simple cradle (70mm (2 ¾ inches))**



● **Connecting ring**



● **Engineered polymer fixed dual cradle**



Weight: 5,09 g

DN 70 or DN 110